

CONNECT

**Building community
& connecting East Cleveland**



Today's agenda

Time	Activity
5:30 PM - 5:40 PM	Attendees arrive & sign in
5:40 PM - 5:45 PM	Welcome & team introductions
5:45 PM - 6:05 PM	Overview of ConnectEC community process
6:05 PM - 6:50 PM	Small group conversations
6:50 PM - 7:00 PM	Next steps

Table of contents

01

Background

Previous plans and community feedback

Discussion

Groups

Share your ideas in small groups

02

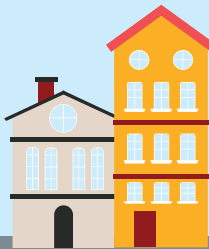
ConnectEC

What is Connect East Cleveland?

04

Next Steps

What's next in the process?





01

Background

Previous plans and community feedback

Previous Planning History



2015

**Development Framework
& Target Area Plan**



2020

**East Cleveland
Visioning Project**



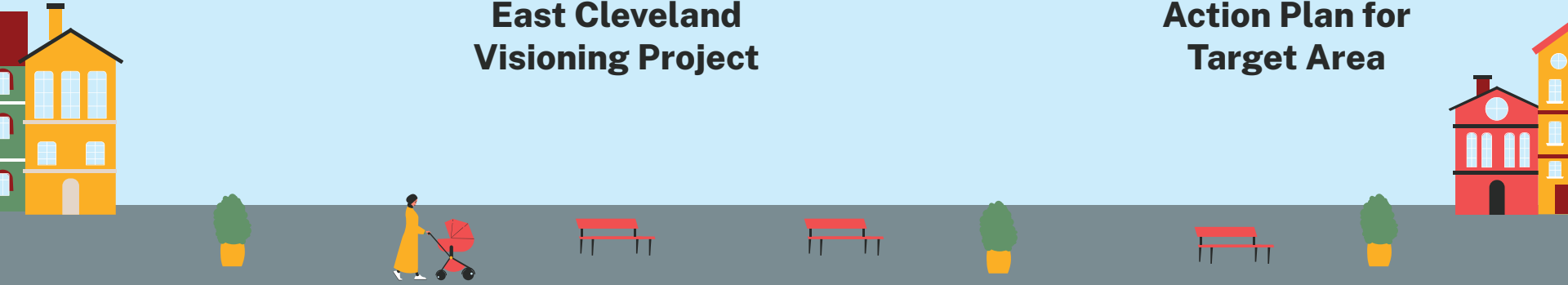
2022

**Community Update
on Target Area**



2022

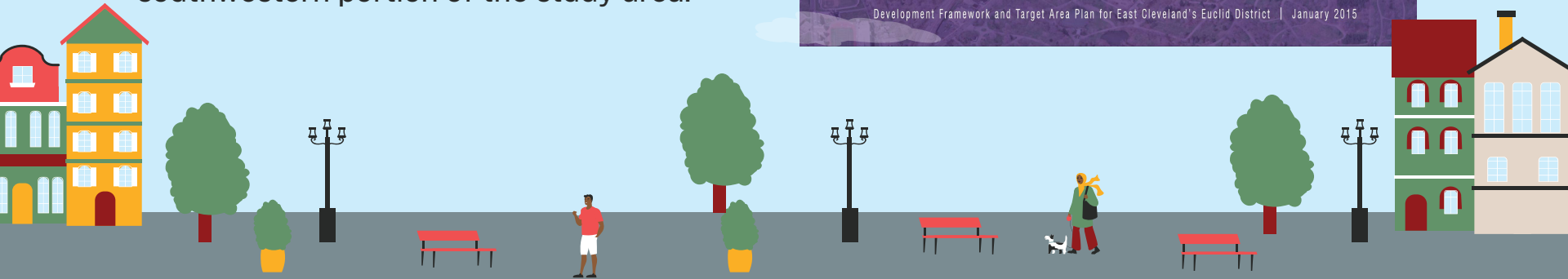
**Action Plan for
Target Area**



2015

Development Framework & Target Area Plan

“After reviewing the district plan, more than forty residents and stakeholders in attendance at the second public charrette were of one mind in their insistence that the development work should begin in the southwestern portion of the study area.”

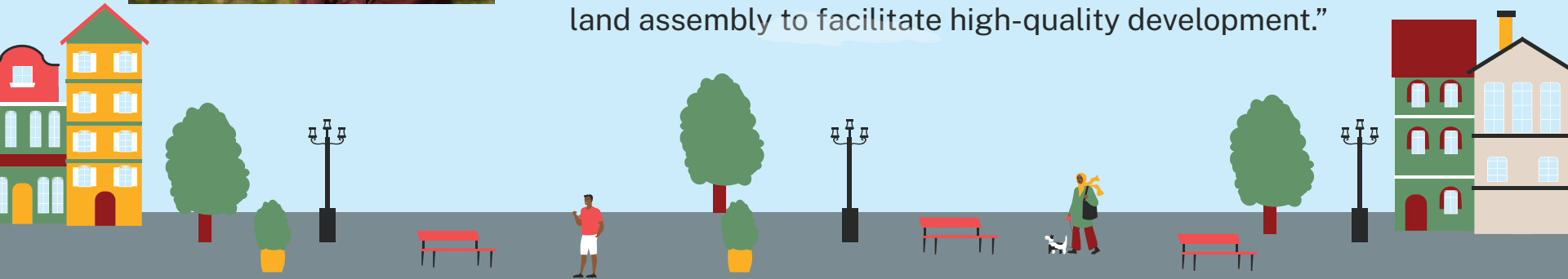


2020

East Cleveland Visioning Project



“Continue to work with the Cuyahoga Land Bank on a specific plan for the target site land assembly. The target site is strategically located along Euclid Avenue and would be a good location for redevelopment, but it is encumbered by hundreds of vacant residential properties. The Land Bank’s efforts will help to identify highest and best use of the target property overall, and the Land Bank will recommend actions for land assembly to facilitate high-quality development.”



2022

Community Update on Target Area

Zones

Euclid: mixed uses & pedestrian prioritization

Middle: townhouses & small multi-family

Interior: modest detached homes

Connectivity

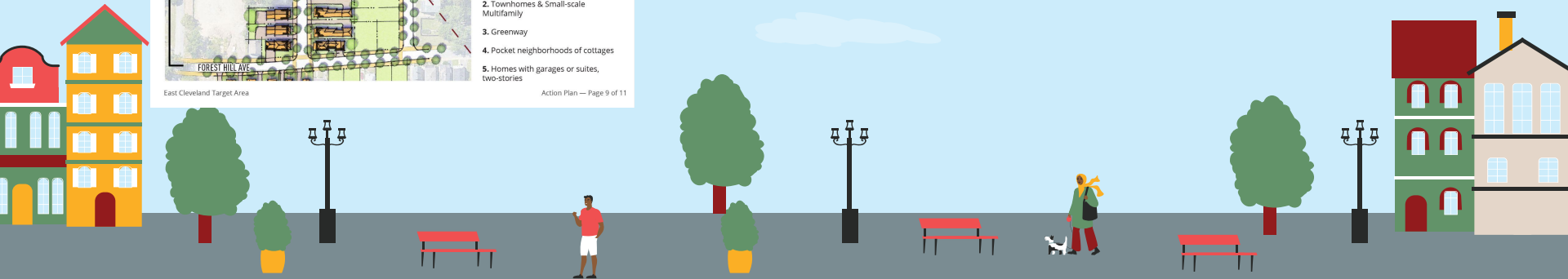
Greenways improve regional & local connections



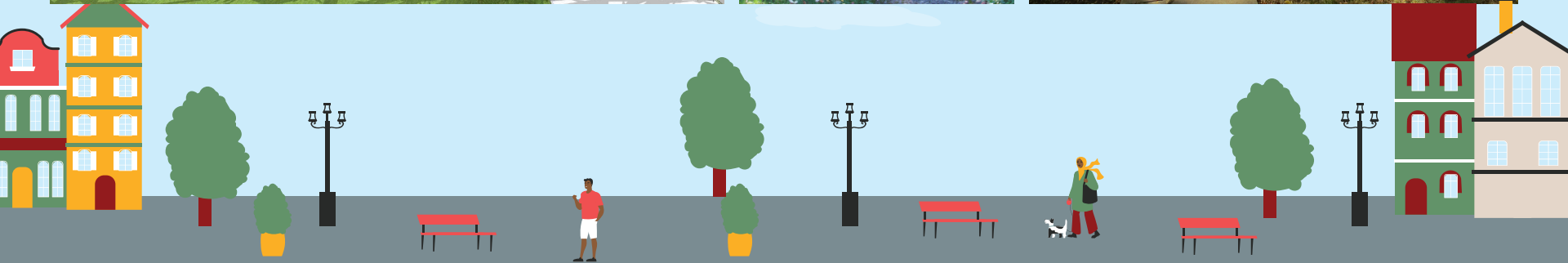
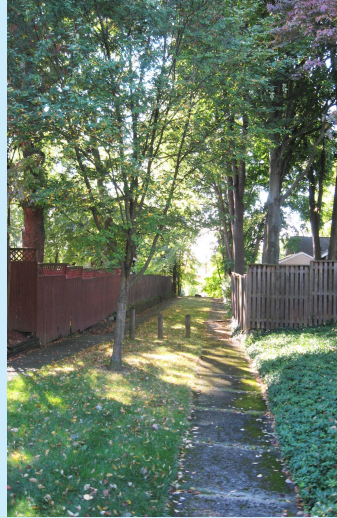
2022

Action Plan for Target Area

“Invest in a park. The Action Plan calls for centralizing access to new parkland by combining a greenway with small pocket parks. A potential greenway makes parkland convenient and accessible.”



What is a Greenway?



Circle EAST

DISTRICT



2022

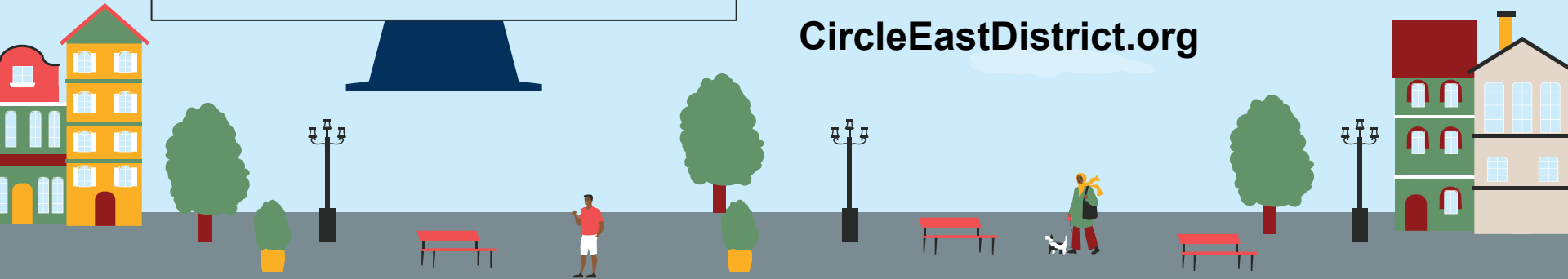
CircleEAST DISTRICT



Project goal:

Redevelop the residential and commercial districts at the East Cleveland western gateway to University Circle in order to expand East Cleveland's property and income tax base, and act as the catalyst for further transformational redevelopment.

CircleEastDistrict.org





CIRCLE EAST DISTRICT | EAST CLEVELAND, OH | WOODLAND NEIGHBORHOOD VIEW LOOKING SOUTH

The drawings, specifications, plans, design and programmatic representations herein are and shall remain the property of the architect. No part of this report, drawings, plans or any work or product of the architect shall be reproduced, stored in a retrieval system, or transmitted in any form or by any means, electronic, mechanical, photocopying, recording, or by any information storage and retrieval system, without the prior written permission of the architect. The architect shall not be responsible for any errors or omissions in this report, drawings, plans or any work or product of the architect. The architect shall not be responsible for any errors or omissions in this report, drawings, plans or any work or product of the architect. The architect shall not be responsible for any errors or omissions in this report, drawings, plans or any work or product of the architect.





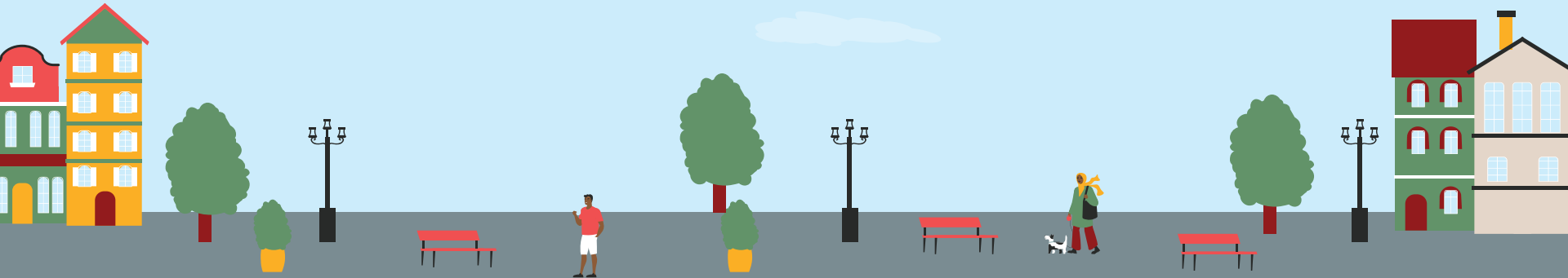
2023

Circle East District + ConnectEC

The ConnectEC process will complement the residential development planned for the Circle East District. Together, we will create the physical, cultural, and social identities that will define this neighborhood and support its ongoing evolution.



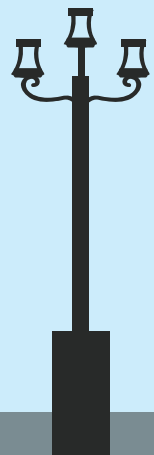
Building community
& connecting East Cleveland



02

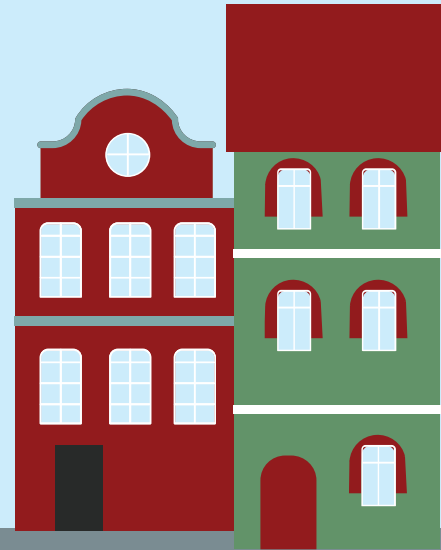
ConnectEC

What is Connect East Cleveland all about?



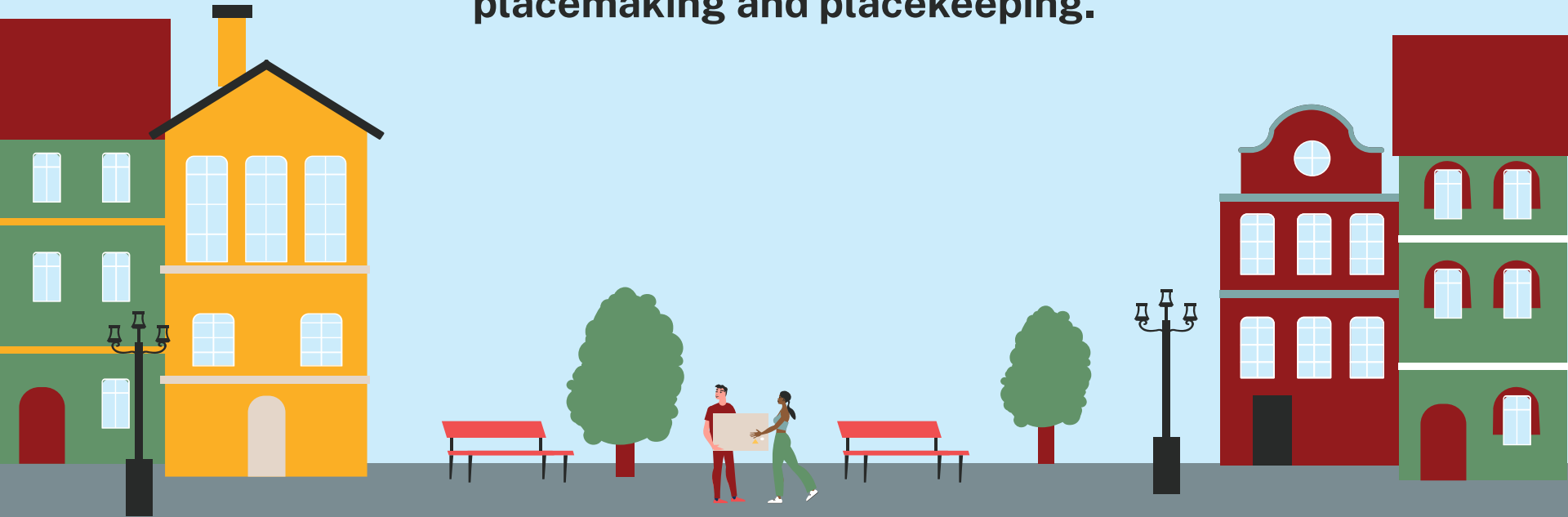
CONNECT

We will work with the community from January through July 2023 to collectively reimagine and reinvent the public spaces in the Circle East district. Through multiple engagement activities, community members will provide the input which will guide the design of streetscape elements, green spaces, and the look and feel of the neighborhood.



CONNECT

**ConnectEC is a community process for
placemaking and placekeeping.**



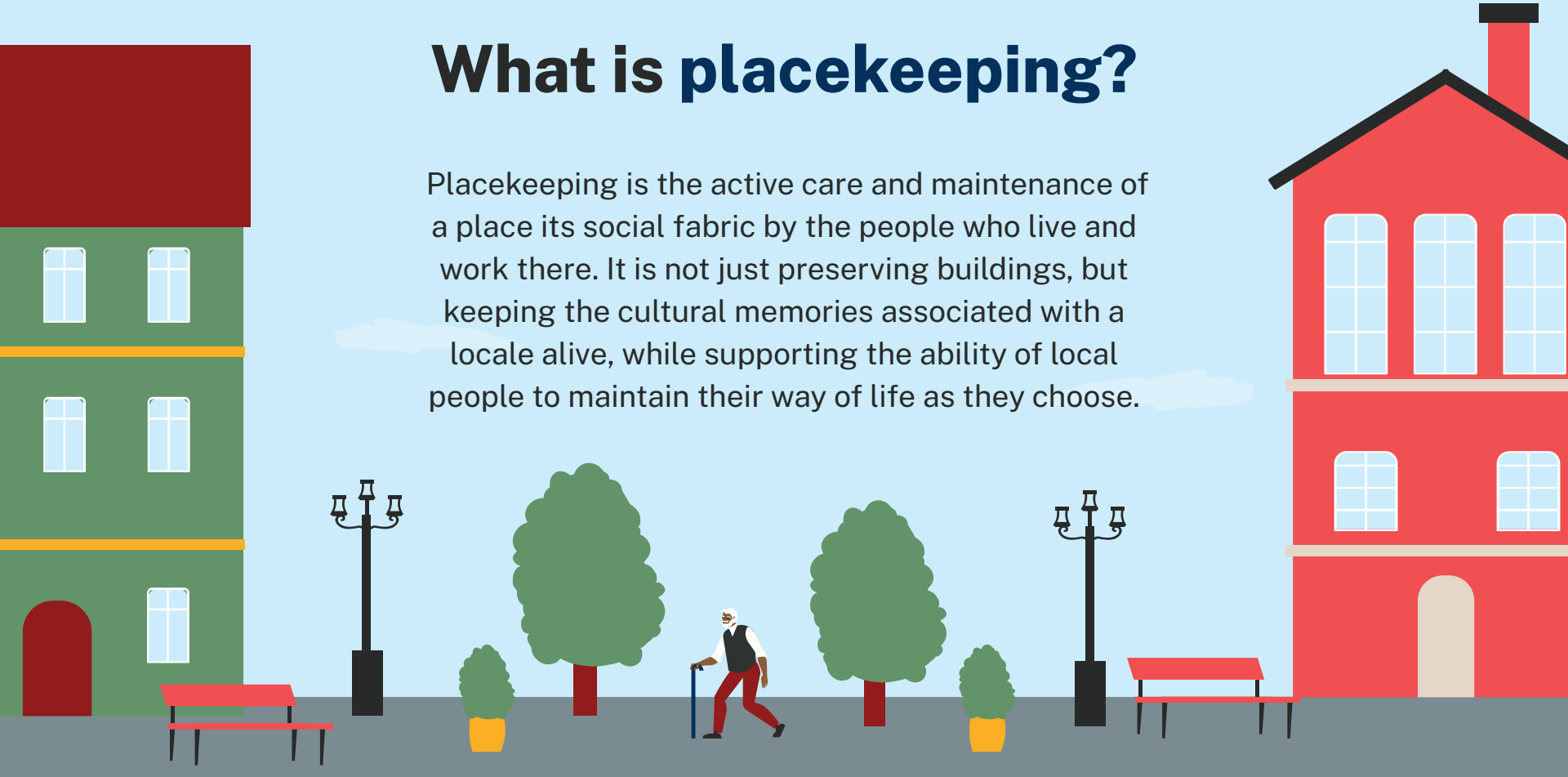
What is placemaking?

Placemaking means creating places and focusing on transforming public spaces to strengthen the connections between people and these places. Placemaking is a process centered on people and their needs, aspirations, desires, and visions, which rely strongly on community participation.

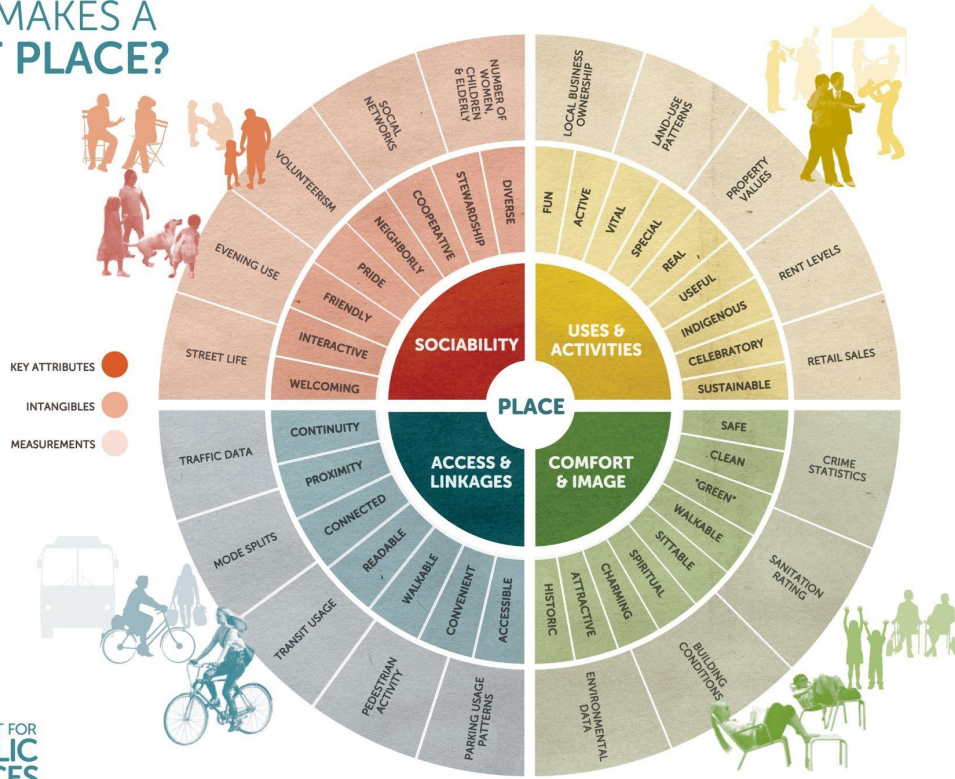


What is **placekeeping**?

Placekeeping is the active care and maintenance of a place its social fabric by the people who live and work there. It is not just preserving buildings, but keeping the cultural memories associated with a locale alive, while supporting the ability of local people to maintain their way of life as they choose.



WHAT MAKES A GREAT PLACE?



Great Places

In evaluating thousands of public spaces around the world, PPS has found that to be successful, they generally share the following four qualities: they are **accessible**; people are engaged in **activities** there; the space is **comfortable** and has a good **image**; and finally, it is a **sociable** place: one where people meet each other and take people when they come to visit.

Project design priorities



Environment

Promote community cohesion, trust, and safety.



Safe Circulation

Improve accessibility to increase connectivity and walkability.



Signage

Create signage and public art to set this neighborhood apart as a distinct place.



Amenities

Provide amenities for neighborhood green spaces that are inviting and useful.



FIND YOUR FAVORITE

PICK YOUR FAVORITE IMAGE FROM EACH CATEGORY AND WRITE A SHORT DESCRIPTION ABOUT WHY YOU CHOSE THAT IMAGE.

PARKLETS

WHY: _____



STREETSCAPE

WHY: _____



CROSSWALKS

WHY: _____



FENCES

WHY: _____



FIND YOUR FAVORITE

PICK YOUR FAVORITE IMAGE FROM EACH CATEGORY AND WRITE A SHORT DESCRIPTION ABOUT WHY YOU CHOSE THAT IMAGE.

MATERIALS

WHY: _____



EVENTS

WHY: _____



TREE PLANTING

WHY: _____



LOW PLANTING

WHY: _____



FIND YOUR FAVORITE

PICK YOUR FAVORITE IMAGE FROM EACH CATEGORY AND WRITE A SHORT DESCRIPTION ABOUT WHY YOU CHOSE THAT IMAGE.

SEATING

WHY: _____



SIGNAGE

WHY: _____



PARKS

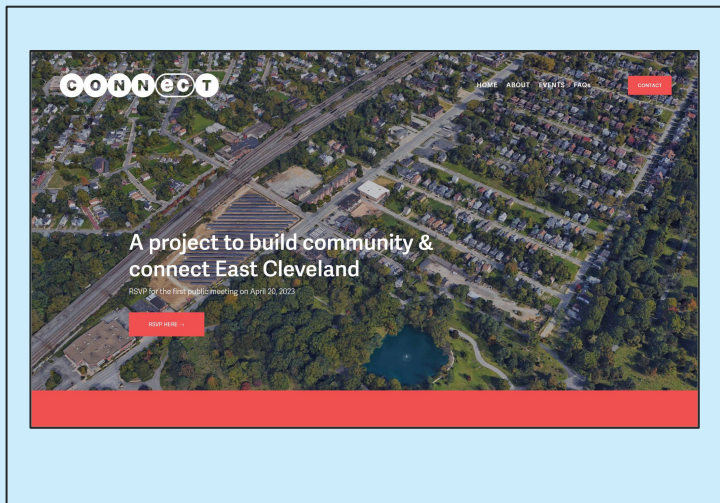
WHY: _____



PLAYGROUNDS

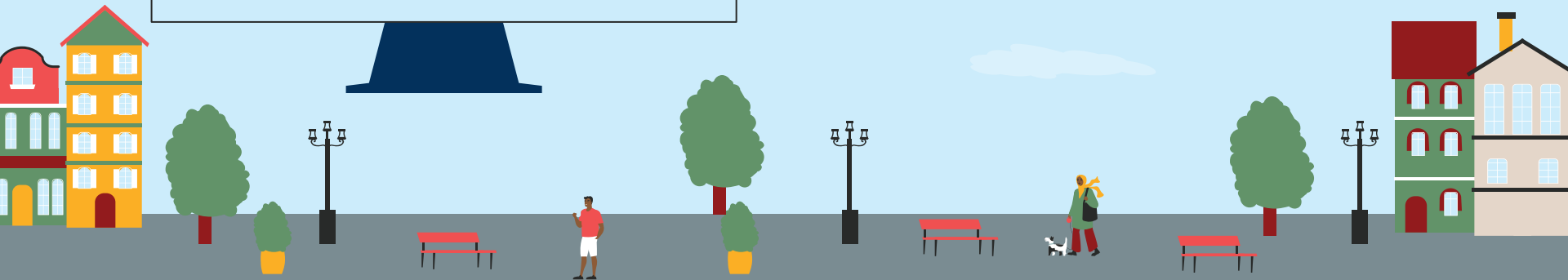
WHY: _____



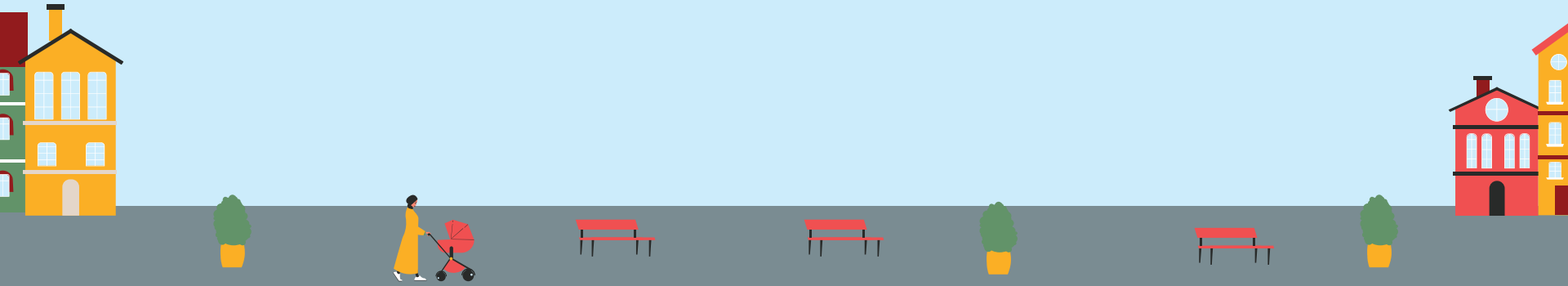


ConnectEC Website

Learn more about placemaking and
stay up-to-date on upcoming events at:
ConnectEastCleveland.com



Engagement activities



Circle East District

EUCLID AVENUE



This aerial photograph shows the Circle East District, a neighborhood in Cleveland, Ohio. The district is outlined in red and is bounded by Euclid Avenue to the north, the railroad tracks to the west, and a wooded area with a pond to the south. The area contains residential streets, a school, a church, and a large solar farm.

Neighborhood context





EXPLORE!
ENJOY!
REPEAT!

University Circle
PNC

University Circle
E. 118 St

WEST TURN
YIELD
STOP

KEEP
RIGHT

NO
PARKING
ANY
TIME

University Circle
Euclid







03

Discussion Groups

Share your ideas with the facilitator at each table





CONNECT

Building community
& connecting East Cleveland

- Potential Townhomes Area
- Potential Greenway
- Potential gate to Lakeview Cemetery



0 0.1 miles (528 ft.) 0.2 miles
5 minute walk



LAKEVIEW CEMETERY


EAST CLEVELAND CLEVELAND HEIGHTS

CONNECT

Building community & connecting East Cleveland

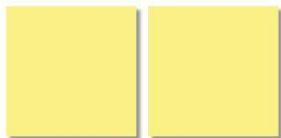
 Potential Townhomes Area

 Potential Greenway

 Potential gate to Lakeview Cemetery



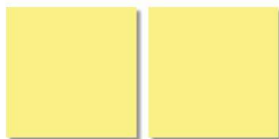
- 1** What places have you visited that look and feel like the kind of place you'd like to live or spend time in?
(Describe what you enjoy about it.)



- 2** What are your top priorities for public spaces as part of the new Circle East development project?
(How would you describe a successful future place?)



- 3** What are your thoughts on having new trees planted on residential streets in the target area?
(Any maintenance concerns? How do you want to be involved?)



- 4** What are your thoughts on a potential neighborhood greenway?
(What features would make it most useful to the community?)



- 5** What makes the best location for a small park or green space?
(For example, a location with more visibility, people walking, and cars driving by OR less visible with fewer cars near a dead end?)



- 6** What are your thoughts on a potential gate entrance to Lakeview Cemetery at the end of Forest Hill Ave?
(When do you visit the cemetery? Would you visit more often?)



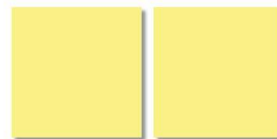
- 7** What is one thing (or many things) that East Cleveland has that other places don't have?
(What's something unique to inspire creative design ideas?)



- 8** What are important places, events, or people from the neighborhood that should be expressed or recognized through placemaking and placekeeping actions?



- 9** What other thoughts or ideas would you like to share?



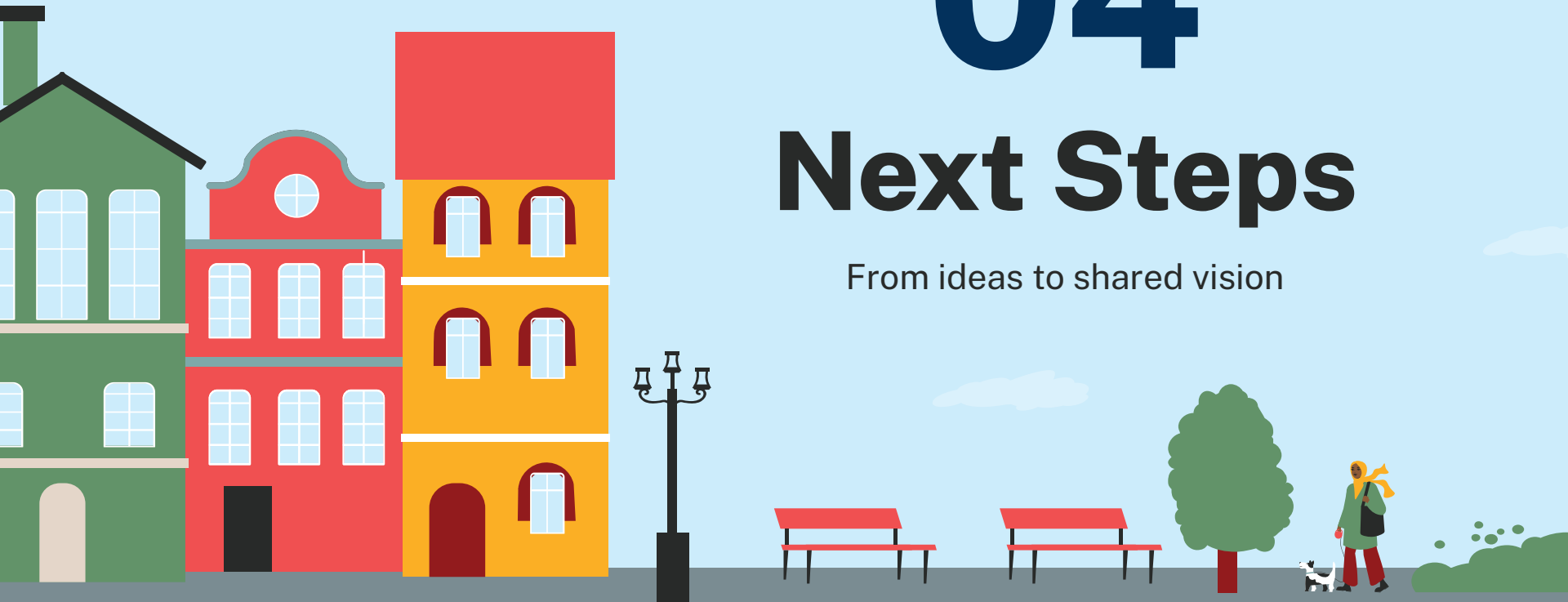
**Let's
go!**



04

Next Steps

From ideas to shared vision



Engagement activities



01 Groundwork

Community Meeting 01 to establish priorities

02

Walking Tour

Design Options

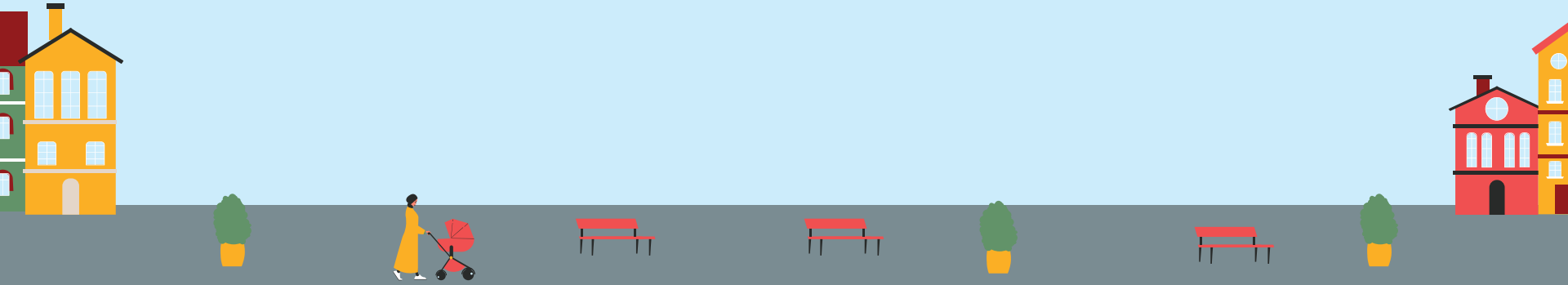
Community Event 02 to present design alternatives

03

Focus Groups

Review Vision

Community Event 03 to share the final recommendations



Here's how to help



Talk to your neighbors

Tell your neighbors about the ConnectEC project



Take a yard sign

Show your neighborhood pride and display a sign in your yard



Sign up for a walking tour

Check the box on the sign in sheet if you'd like to participate



Attend the next meeting

All who join the contact list will be notified about the next event



Thank you!

Stay connected with us at:
[ConnectEastCleveland.com](https://www.ConnectEastCleveland.com)

